

Name: _____

Total: _____

**Introduction to Psychology
Spring 2008, Exam 1
Tues/Thurs 12:40-2:10pm
Version B**

Instructions (Read Carefully!): Please write the test version on the apperson form as well to make sure it gets graded correctly. You may write on the exam to work out problems but the multiple choice will ONLY be graded on the apperson. The answers on the apperson will be graded regardless of what you circle in the booklet so transfer your answers carefully.

The exam booklet has 50 questions, plus 5 extra credit questions at the end. Choose the **BEST** answer.

Good Luck!!!

**Do NOT turn the page over until told to do so.
Thanks!**

Name _____

1. Which modern psychological perspective focuses on the mind as a computer?
 - a. **Cognitive**
 - b. Psychodynamic
 - c. Sociocultural
 - d. Learning

2. Today _____ is considered a pseudoscience but historically it was considered a way to determine a one's personality, future career path, and sometimes one's spouse.
 - a. Behaviorism
 - b. Functionalism
 - c. **Phrenology**
 - d. Introspection

3. Psychology can be defined as a discipline concerned with:
 - a. Understanding of people and their relationships
 - b. The brain and how it works
 - c. **Behavior and mental processes and how they are affected by an organism's physical state, mental state, and external environment**
 - d. The medical treatment of mental disorders

4. Sam sees an ad in the yellow pages for a psychotherapist. Since this practitioner is called a "psychotherapist", Sam realizes that:
 - a. **The therapist may not have a degree at all**
 - b. The therapist has definitely been trained in psychoanalysis
 - c. The therapist has a PhD
 - d. The therapist has psychic abilities

5. Which of the following methods of psychotherapy emphasizes unconscious motives and conflicts?
 - a. Introspection
 - b. Functionalism
 - c. **Psychoanalysis**
 - d. Phrenology

6. An important characteristic of critical thinkers is:
 - a. The acceptance of intuition as a valid source of ideas
 - b. The belief that all opinions are created equal
 - c. The ability to make judgments before having all of the facts
 - d. **The use of reason and logic when debating an idea or theory**

Name _____

7. When Sasha takes a personality test she is told that the test is reliable, that is, it:
 - a. Predicts the other personality traits that she may have
 - b. Produces the same results from one time to the next when re-taken by the same person**
 - c. Measures what it is supposed to measure
 - d. Compares its results against established standards of performance

8. Natalie is trying to define “anxiety” in a way that can be empirically tested. She is attempting to find an appropriate:
 - a. Operational definition**
 - b. Double-blind study
 - c. Hypothesis
 - d. Theory

9. In a journal article, the authors report that the result is statistically significant at the $P < 0.05$ level. This means that:
 - a. The probability that the result is due to “real” differences between groups is 5 times in 100 repetitions of the study
 - b. The results failed to support the hypothesis of the study
 - c. The finding will significantly effect 5% of the population
 - d. The probability that the result occurred by chance is extremely low and the probability that the difference is “real” is extremely high**

10. A case study would be the most appropriate method to investigate which of these topics?
 - a. The ways in which the games that boys play differ from the games that girls play
 - b. The development of a male baby raised as a female after a surgical error destroyed his penis**
 - c. Changes in aggression levels that occur when people watch violent movies
 - d. The math skills of students in Japan as compared to those in The United States

11. All of the following variables show a negative correlation **EXCEPT**:
 - a. Average income and the incidence of dental disease
 - b. Hours spent watching TV and grade point average
 - c. Adult shoe size and IQ scores**
 - d. The price of a car and the age of a car

Name _____

12. Which of the following would be most appropriate method to use to collect data on the maternal behavior in lions in the wild
- Experiments
 - Correlation
 - Observation**
 - Case study
13. All of the following are examples of reflexes **EXCEPT**:
- Your hand pulling back in pain
 - Your knee jerking when tapped with a tool at the doctor's office
 - The erection of the penis
 - The secretion of hormones**
14. An advantage of case studies is that:
- Researchers can control the outcome
 - They provide in-depth information about unusual cases**
 - They can confirm hypotheses
 - Their findings can be generalized to the rest of the population
15. Dr. Harding has been treating a child with Attention Deficit Hyperactivity Disorder (ADHD). She decides to write a prescription for the drug Ritalin. Given this information it is most likely that Dr. Harding is a:
- Clinical psychologist
 - Psychiatrist**
 - Psychoanalyst
 - School psychologist
16. According to the principle of falsifiability:
- A scientific theory must make predictions that are specific enough to expose the theory to the possibility of being disconfirmed**
 - Hypotheses should be considered false until scientific research proves, without a doubt, that they are true
 - Researchers must conduct naturalistic observations in order to determine the cause of a particular behavior
 - When researchers make risky predictions they come to false conclusions

Name _____

17. Two sets of observations, assessing adult shoe size and IQ, are compared. Which of the following is the most likely outcome?
- a. **The two variables will be uncorrelated**
 - b. The first variable will cause the second variable
 - c. The two variables will be positively correlated
 - d. The two variables will be negatively correlated
18. Which modern psychological perspective focuses on bodily events and their effects on behavior?
- a. **The biological perspective**
 - b. The psychodynamic perspective
 - c. The cognitive perspective
 - d. The evolutionary perspective

Use the following study to answer questions 19 & 20.

In a laboratory, smokers are asked to “drive” using a computerized simulator equipped with a stick shift and a gas pedal. The object is to maximize the distance covered by driving as fast as possible on a winding road while avoiding rear-end collisions. Some of the subjects smoke a real cigarette immediately before climbing into the driver’s seat. Others smoke a fake cigarette without nicotine. You are interested in comparing how many collisions the two groups have.

- a. The number of collisions
- b. The driving skills of each driver
- c. The use of nicotine
- d. The use of a driving simulator

19. In the above study, what is the independent variable? **C**

20. In the above study, what is the dependent variable? **A**

Name _____

21. Which of the following is a disadvantage of case studies?
- a. Case studies produce a more detailed picture of an individual than other methods do.
 - b. They allow researchers to prove something's existence, even if it is incredibly rare.
 - c. Researchers often use them to study new and rare cases
 - d. Their results cannot be generalized to the rest of the population**
22. Good researchers:
- a. Are skeptical, not cynical**
 - b. Are cynical, not skeptical
 - c. Ignore data that disconfirm their hypotheses
 - d. Don't make any predictions prior to running an experiment
23. An aspect of language that is unique to humans is:
- a. The ability to communicate with sounds
 - b. The ability to create unlimited, unique sentences**
 - c. The ability to communicate with gestures
 - d. The ability to understand the sounds produced by others
24. The Language Acquisition Device (LAD) suggested by Chomsky is based on the idea that language:
- a. Is based purely on experience as we develop
 - b. Is based purely on genetics and is innate in humans**
 - c. Is universal between all animal species
 - d. Is based on a continuum between genetics and experience
25. According to the majority of researchers today, are we destined to become our parents due to genetics?
- a. Yes, genetics make us who we are and there is no way to change that
 - b. Yes, but not because of genetics, we are who we are solely due to our environment
 - c. No, genetics have no influence on personality
 - d. No, genetics and environment seem to work together to some degree to make us who we are**
26. Studying animal subjects allows us to do all of the following **EXCEPT**:
- a. Learn more about a particular species
 - b. Test research questions that are unethical to perform on human subjects
 - c. Acquire a signed informed consent form from each subject**
 - d. Do cross-comparisons of different species such as apes and humans

Name _____

27. A person is asked to listen to the clicking of a metronome and then to report exactly *what* she heard. This type of research would be typical in which of the following schools of psychology?
- Psychoanalysis
 - Structuralism**
 - Behaviorism
 - Functionalism
28. If we were interested in running an experiment on a sample of the Intro Psych students in this class the best way to assure that our sample is representative of our population is:
- To have a random sample where everyone is equally likely to be picked (ex: pick a number from a hat)**
 - To hand select each subject to assure you have the subjects you want
 - To pick the people who sit in the first two rows of seats
 - To pick the last people to walk through the door of the room at the start of class
29. Informed consent requires researchers to inform subjects of all of the following **EXCEPT**:
- The right to leave the experiment at any time
 - Explanations of any deception before they begin the experiment**
 - Any foreseeable risks
 - A general idea of the task they are about to be a part of
30. Running an experiment “double-blind” means that:
- Only the subject is unaware of what condition he/she is in
 - Only the experimenter is unaware of what condition the subject is in
 - Neither the experimenter nor the subject is aware what condition the subject is in**
 - A test of visual deprivation in which both the experimenter and the subject are aware of the condition the subject is in
31. When running an experiment on a new medicine it is important that the experimental group receive the medicine pill as well as the control group receiving a sugar pill. Why?
- To avoid experimenter bias
 - To control for the placebo effect**
 - To make sure that none of the subject s feel left out by not getting a pill
 - To confuse the experimenters

Name _____

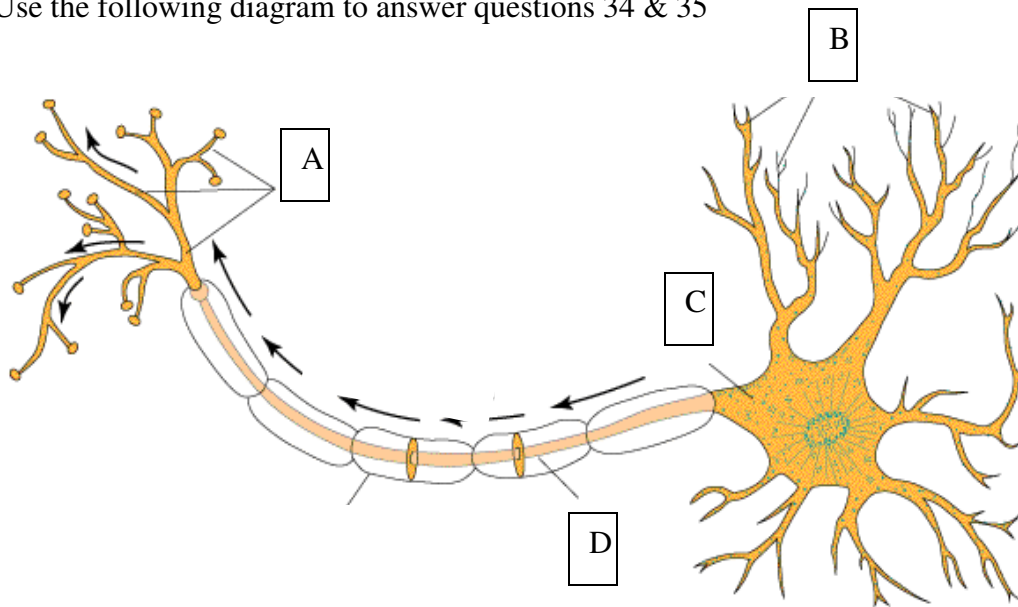
32. Cameron touches a hot iron and immediately pulls his hand away. His quick response occurs because:

- a. Neurons in the spinal cord touch end to end to increase speed
- b. The brain registered that pain is occurring and responds quickly
- c. His glands have secreted chemical messengers called hormones
- d. **Spinal reflexes are automatic, requiring no conscious effort**

33. What is a hypothesis?

- a. **An “educated guess”**
- b. A fact that has been tested scientifically
- c. A prediction based on intuition
- d. An explanation for the results of an experiment after the data is collected

Use the following diagram to answer questions 34 & 35



34. What is the Axon? **D**

35. What are the Dendrites? **B**

Name _____

36. The Peripheral nervous system is broken down into two main parts. They are:
- Somatic nervous system and autonomic nervous system**
 - Central nervous system and parasympathetic nervous system
 - Sympathetic nervous system and central nervous system
 - Brain and spinal cord
37. The sympathetic nervous system is mainly responsible for:
- Feed and breed response
 - Fight or flight response**
 - Skeletal muscle control
 - Reflexes
38. When neurons 'talk' to each other they send electrochemical signals. What does the "electro" in electrochemical signal mean?
- An impulse sent across a synapse between neurons
 - The signal sent from the axon terminals
 - The action potential sent along the neuron's axon**
 - The biological machinery in the cell body
39. Motor neurons:
- Send messages from our sensory receptors on our body to our brain and spinal cord
 - Send messages from our brain and spinal cord to our muscles for movement**
 - Send messages from interneurons to our brain
 - Send messages to and from different parts of our brain
40. Which of our five senses **DOES NOT** get relayed through the thalamus? ****Note:** there are 5 possible choices (a-e)
- Vision
 - Touch
 - Olfaction (sense of smell)**
 - Audition (hearing)
 - Taste
41. If you suffer brain damage to the _____, you will have memory deficits such as amnesia.
- Hippocampus**
 - Hypothalamus
 - The cortex
 - The pituitary

Name _____

42. What structure connects the two cerebral hemispheres allowing them to communicate with each other?
- The pons
 - The thalamus
 - The reticular formation
 - The corpus collosum**
43. Which lobe of the cortex processes auditory information?
- The frontal lobe
 - The parietal lobe
 - The occipital lobe
 - The temporal lobe**
44. The brain stem includes all of the following **EXCEPT**:
- Pons
 - Thalamus**
 - Medulla
 - Reticular activating formation
45. The _____ is part of the limbic system that is associated with emotion such as fear and anger.
- Hippocampus
 - Amygdala**
 - Pituitary
 - Medulla
46. _____ is a procedure that uses a magnet to temporarily disrupt brain function causing a “virtual lesion”.
- Positron-emission tomography (PET)
 - Functional magnetic resonance imaging (fMRI)
 - Electroencephalogram (EEG)
 - Transcranial magnetic stimulation (TMS)**
47. Magnetic resonance imaging (MRI) allows a researcher to:
- Detect blood flow to different regions of the brain**
 - Measure electrical activity of the brain by looking at waveforms
 - Detect the decay of a radioactive material in the blood
 - Detect electrical activity within a single cell

Name _____

48. Which of the following regions of the brain contains the somatosensory cortex, which receives information about pressure, pain, touch, and temperature from all over the body?
- a. Temporal lobes
 - b. Parietal lobes**
 - c. Frontal lobes
 - d. Occipital lobes
49. The homunculus is represented in which part of the cortex?
- a. The motor cortex
 - b. The somatosensory cortex**
 - c. The auditory cortex
 - d. The visual cortex
50. If you have damage to your brain that results in the inability to comprehend language you mostly likely have suffered damage to:
- a. Broca's area
 - b. Wernicke's area**
 - c. The motor cortex
 - d. The hippocampus

*****EXTRA CREDIT (51-55)*****

51. An ideal scientist should:
- a. Not express skepticism of new ideas.
 - b. Not support falsifiable theories.
 - c. Rely on scientific intuition.
 - d. Be willing to make "risky predictions."**
52. Ethical standards require researchers to:
- a. Avoid double-blind studies.
 - b. Limit the use of volunteers as subjects.
 - c. Avoid the use of deception.
 - d. Obtain informed consent from subjects**
53. Unlike modern psychologists, great thinkers of the past:
- a. Relied on observations based on anecdote and description of individual cases.**
 - b. Wanted to describe, predict, understand, and modify behavior.
 - c. Relied heavily on empirical evidence.
 - d. Wanted to know what motivated people's actions.

54. Emily Rosa's experiment with Therapeutic Touch Practitioners found that:
- a. The practitioners were always able to tell which of their hands Emily had her hand over
 - b. The practitioners were at chance when asked which hand Emily's hand was over**
 - c. The practitioners cheated by peeking through the barrier
 - d. Emily's experiment was biased because many people expected the practitioners to fail.
55. So far in this class we have learned that:
- a. Psychology is useful to understand even if we don't want to be a psychologist**
 - b. Psychology does not explain any human behavior
 - c. Psychology is only useful if we want to analyze the meaning of our dreams
 - d. Psychology is best learned from watching TV shows like Oprah.